

System Solutions



The Next Step In The Evolution

The iNSIGHT™ 20 from Scantron® is a compact, affordable desktop model scanner that combines document imaging technology along with the proven data collection capabilities and accuracy of optical mark recognition (OMR). The iNSIGHT 20 is an industry exclusive scanner. Scantron applied over fifty years of engineering, forms design, applications development and customer support experience to ensure our customers' success. Whenever you need a reasonably priced and compact scanner that has the accuracy of OMR and the productivity and flexibility of Document Imaging, the iNSIGHT 20 is the right solution for you.

Meeting Your Document Imaging and OMR Needs

Due to its unique blend of capabilities, the iNSIGHT 20 is well priced and perfectly positioned to address applications such as testing, surveys attendance, grading, student portfolios, personnel records, archival, and general back file conversions. Depending on your requirements and budget, Scantron can meet the needs of your application. For higher-volume processing needs, Scantron also offers the iNSIGHT 30, which also combines full document imaging with the accuracy of OMR.



Data Collection

Data Collection is the process of reading marks from a printed form (e.g. tests, surveys, ballots, etc.) and converting it to ASCII data. The iNSIGHT 20 accurately scans the form for data while our ScanTools Plus™ software controls the scanning process and stores the data that is read. The scanner and software work together reading up to 1,800 sheets per hour.

The iNSIGHT 20 scanner can read written marks (such as bubbles, check marks, tick marks) and bar codes. The scanner, working with ScanTools Plus software, can also scan grayscale images for digital storage. In addition, the iNSIGHT 20 can read machine print and handprint using RealTime Character Recognition software (available separately).

Outstanding Accuracy

Data Collection Features

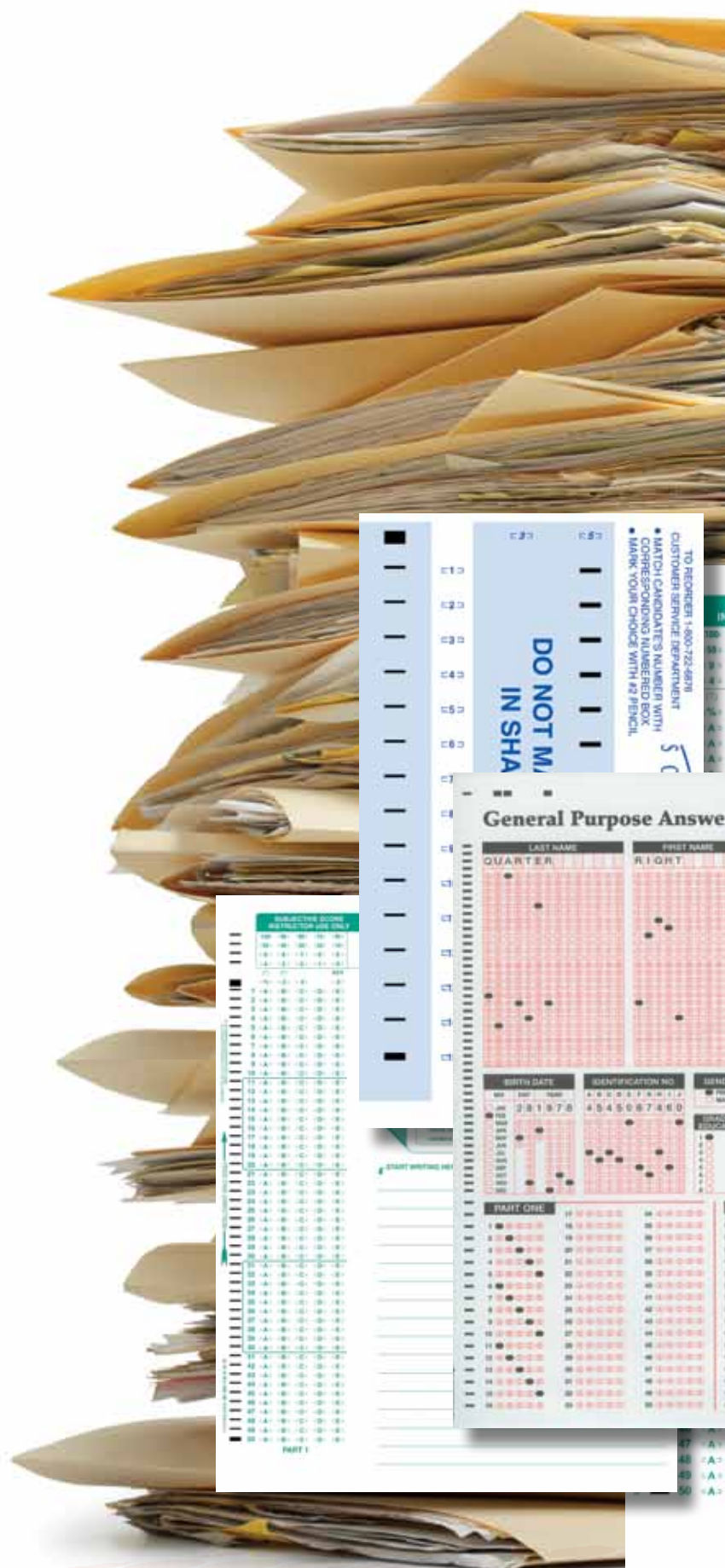
- Includes ScanTools Plus data collection software
- Provides 8-bit, 256 grayscale levels and 200 dpi images
- Ink and pencil mark detection
- Allows you to capture, name and archive image clips (TIFF, JPEG)
- Software recognized bar code
- Processes machine and hand print data with the optional RealTime Character Recognition utilizing NestorReader software
- Maintains software compatibility with existing ScanTools applications

Document Imaging

Document imaging is the process of scanning paper documents, converting them to digital images. We know that the documents you work with aren't always the perfect size, shape or quality for scanning; that is what makes the iNSIGHT 20 perfect for your scanning needs.

This scanner can effortlessly handle sheets of multiple sizes and thickness in a single batch; from small card stock to long print-outs. After scanning, with one-click you can select the format of the scanned image, the resolution, the file type, and the destination of the resulting file using the Click&Scan software.

In document imaging mode, the iNSIGHT 20 scanner with Click&Scan software, can scan up to 1,800 two-sided black&white, grayscale and color images at 200 dots-per-inch (dpi) per hour.





Exceptional Productivity

Document Imaging Features

- Includes Click&Scan software which offers one-click functionality to send documents to file, email, printers, fax printers and desktop applications
- Utilizes TWAIN Driver (included)
- Output resolutions from 75 to 1200 dpi
- Interactive brightness, contrast, and color adjustment
- Optical resolution at 600 dpi
- Scans at speeds up to 30 page per minute/60 images per minute
- Simultaneous black & white, color or grayscale image output
- Save files in TIFF, JPEG, RTF and PDF formats
- Supported by Scantron's extensive services organization to ensure maximum uptime and customer satisfaction

Customer Application Sidebars

Testing and Training

- Tests and learning assessment
- Instructor, performance, and course evaluations
- Enrollment and tracking
- Employee in-services
- Student profiles, documentation, and forms

Research and Evaluation

- Survey and questionnaire data collection
- Product research
- Program evaluations
- Competitive data collection
- Enrollment and applications

Human Resources

- Payroll/time sheets
- Benefit enrollments
- Applicant tracking
- Employee change of status
- Employee surveys
- 360-Degree surveys

Healthcare

- Patient encounter forms
- Patient satisfaction surveys
- Medical histories and patient forms
- Patient, needs and risk assessments
- Nurse staffing reports
- Continuing education evaluations

General Specifications

Scanning Technology	Dual CCD/Grayscale output bit depth is 256 levels (8-bit), Color capture bit depth is 48 bits (16 x 3), Color output bit depth is 24 bits (8 x 3).
Optical Resolution	600 dpi
Multi-feed Detection	With ultrasonic technology
Connectivity	USB 2.0
Bundled Software	TWAIN Drivers; Click & Scan; ScanTools Plus
Electrical Requirements	100-240 V (International); 50/60 Hz; Universal power supply included
Power Consumption	Sleep Mode < 6 watts, Running: < 35 watts
Environmental Factors	Energy Star qualified scanner; Operating temperature: 15-35° C (59-95° F); Operating humidity: 15-76 percent relative humidity
Acoustical Noise (operator position sound pressure level)	Standby mode: <32 dB(A); Operating mode: <65 dB(A)
Physical Description	30" x 13" x 10.75" operational, 6.5" x 13" X, 9.5" storage foot print, Weight: 16.5 lbs
Recommended PC Configuration	For documents up to 356 mm (14 in.) long at 400 dpi: Pentium 4, 3.2 GHz processor, 512 MB RAM For documents up to 660 mm (26 in.) long at 400 dpi: Pentium 4, 3.2 GHz processor, 1 GB RAM For longer documents/higher resolutions: Pentium 4, 3.2 GHz processor, 3 GB RAM
Supported Operating Systems	Windows XP SP2; Windows Vista (32-bit)

Data Collection Specification

Throughput	Up to 1800 Sheets per hour
Read Heads	200 dpi resolution, up to 256 levels of grayscale per pixel; pencil and ink read capabilities
Forms	2.5" x 5.5" to 8.5" x 14" (60-100 lb. Offset), Uses both Mark Reflex and Trans-Optic forms; Pencil and ink forms may be used
Feeder Capacity	40 sheets, 90 g/m ² (24 lb bond, 60 lb Offset)
Spacing's supported	.166, .166 48 cell, .200 inline, .200 offset, .200 line read, and .300 line read
Barcode	Standard - Software read through ScanTools
Bundled Software	ScanTools Plus

Document Imaging Specifications

Throughput (200 dpi, landscape, letter size, black and white/grayscale/color)	Up to 30 page per minute/ 60 images per minute
Image output	Black and white, grayscale (8 bit), color (24 bit)
Output resolution	75, 100, 150, 200, 240, 300, 400, 600 and 1200 dpi
Maximum document size	216 mm x 863 mm (8.5 in. x 34 in.)
Minimum document size	64 mm x 89 mm (2.5 in. x 3.5 in.)
Paper Thickness and Weight	34-413 g/m ² 9-110 lb.) paper
Feeder Capacity	Up to 70 sheets of 60 g/m ² (16 lb.) paper
Bundled Software	TWAIN driver, Click & Scan
File Format Outputs	Single and multi-page TIFF, JPEG, RTE, PDF

Please visit us at www.scantron.com for a complete overview of iNSIGHT system requirements or call us at 1-800-SCANTRON for more information.

© 2009 Scantron Corporation. All rights reserved. Scantron and the Scantron logo are registered trademarks. P/N 277-223-004

